

# Maverick



## IP Energy Metering Appliance



All you need is a web browser running on any laptop, PDA, or cell phone anywhere in the world to monitor and log energy consumption, receive email alerts if energy usage crosses a threshold, shed loads if demand exceeds a preset limit and receive periodic usage reports which can be imported into Excel, Word or any other application.

The *Maverick* IP Energy Metering Appliance incorporates a web server, accepts a pulse input from any energy meter (KWH, water, gas, steam or compressed air) and has two relay outputs for load shedding and auxiliary control. An auxiliary analog input is available to log, trend and email alert instantaneous demand or load conditions, e.g. outside air temp, humidity or wind speed. This input can also be used to switch a relay at a preset threshold.

Power the appliance with any 24VAC transformer, plug it into a hub/router, launch any web browser, punch in the default IP and connect. No custom software to load, no discovery routines, no custom cables or training. The Energy Metering *Maverick* serves up static web pages with dynamic energy consumption data updates every second or two. Most users can configure and utilize the appliance without any training or support in less than 5 minutes.

For effective utilization of energy, waste and inefficiency have to be eliminated. This can only be accomplished by holding energy consumers accountable. The *Maverick* IP Energy Metering Appliance provides an ideal low cost solution for consumption data acquisition and analysis. Demand peaks can be controlled with email alerts or automatic load shedding. Manual override capability is available to stop the load shedding feature in case of an emergency.

**ASHRAE '09**  
Booth # 3510

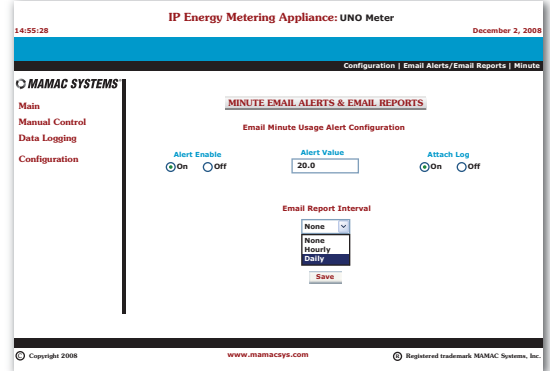
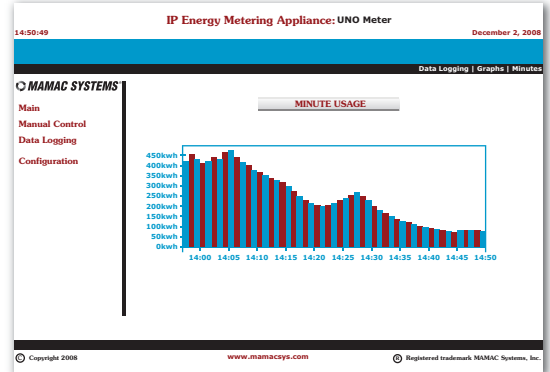
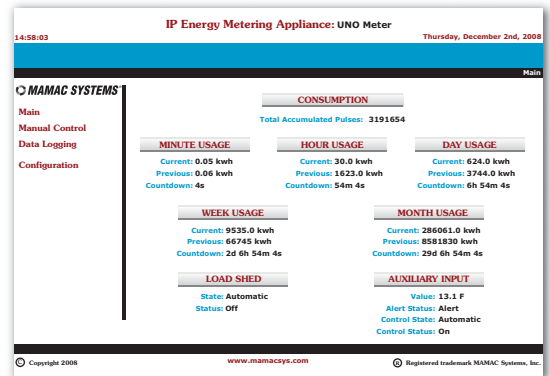
RoHS

 **MAMAC SYSTEMS®**

[www.mamacsys.com](http://www.mamacsys.com)

# Maverick IP Energy Metering Appliance

- Embedded web server with a lean TCP-IP stack - HTTP, SMTP, DHCP, FTP, and ARP. Embedded XML formatted input and output data.
- Accepts a pulse input (dry contact or digital input) from any electric, gas, steam or compressed air meter, converts it into appropriate value based on the programmed meter constant and displays the energy consumption for the current and previous period by the minute, hour, day, week and month.
- Logs energy consumption by the minute, hour, day, week and month in CSV files and sends an email alert if minute, hour, day, week or monthly consumption exceeds a predefined limit. Option is available to attach the logged CSV data file to the email alert. Displays the minute, hour, daily, weekly and monthly energy usage in bar graphs for review and analysis.
- Energy consumption reports can be periodically emailed (hourly, daily, weekly or monthly) to two unique addresses and can be imported into Excel, Word, NotePad, or any other application which accepts CSV data.
- The appliance also has capability to load shed (open or close a SPDT relay contact) when the consumption or demand exceeds a programmed threshold. A one, three, six or nine minute delay can be programmed prior to shedding the load to insure the demand is genuine and not an inrush spike. Manual override capability is available to remotely stop the load shedding in case of emergency.
- An auxiliary input is available to monitor, log, trend, send email alerts and to switch a relay at a preset limit. This input can be used to monitor instantaneous demand or load conditions, e.g. outside air temp, wind speed, humidity or any other process consuming the energy.



**New at ASHRAE**

**Maverick Browser**

Monitor multiple *Maverick* Appliances on one HTML page

**Environmental Appliance**

Browser based programmable thermostat and humidity controller based on the *Maverick* platform.

**MSRP US\$ 495.00 each**

**MAMAC SYSTEMS®**

8128 Century Blvd • Minneapolis, MN 55317-8002 • USA  
800-843-5116 • 952-556-4900 • Fax 952-556-4997  
sales@mamacsys.com • www.mamacsys.com