

ACTUATORS AND CONTROLS

Solenoids

DIRECT MOUNTED NAMUR SOLENOID VALVES

SOLENOID GENERAL SPECIFICATIONS

TEMPERATURE LIMITS:

Media: 0°F to +180°F.

Ambient:

- 1: NEMA 4, 4X, 0°F to +180°F.
- 2: NEMA 4-4X-7-9, 0°F to +125°F.

COIL RATINGS:

- 1: NEMA 4, 4X: Continuous duty molded Class H insulation.
- 2: NEMA 4-4X-7-9: Continuous duty molded Class F

POWER CONSUMPTION:

6 Watts

MATERIALS:

- Valve Body=Aluminum, anodized.
- Fasteners=Stainless Steel
- Seals & O-Rings=Nitrile.

CV FLOW RATE:

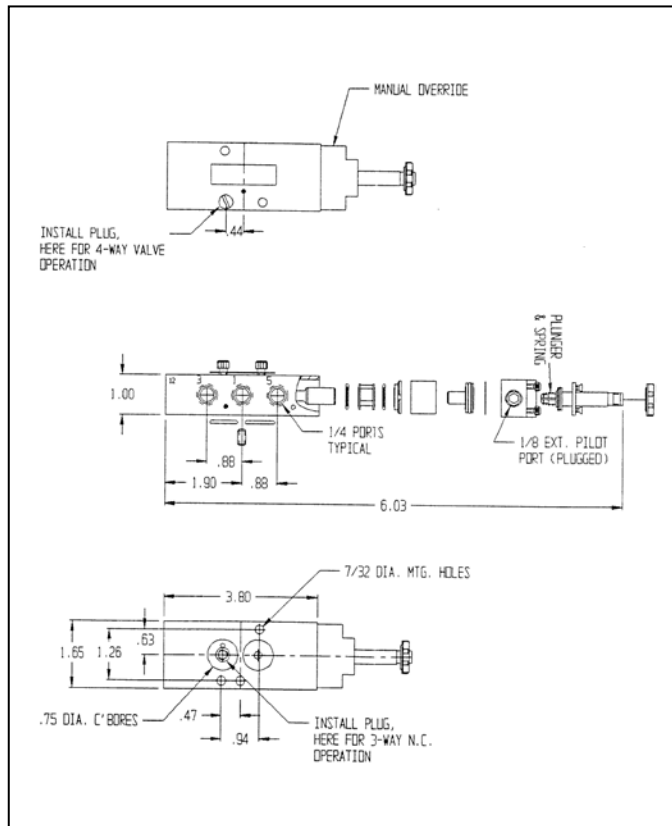
1.8

COIL VOLTAGES AVAILABLE:

Coil Voltage Variation: +/-10% of Nominal

- 1: 120 VAC-60 Hz/110 VAC-50 Hz.
- 2: 240 VAC-60 Hz/220 VAC-50 Hz/120 VDC.
- 3: 48 VAC-60 Hz/44 VAC-50 Hz/24 VDC.
- 4: 24 VAC-60 Hz/22 VAC-50 Hz/12 VDC.

NEMA 4-4X UL, CSA, PTB&CE



NEMA 4, 4X, 7 & 9 UL, CSA, PTB&CE

